



NETWORK OPERATIONS INTELLIGENCE PLATFORM

# Know What Actually Changed in Your Network

Most outages start with a change. We watch every one.

ConfigGuard captures pre/post network state — configurations, interfaces, routing tables, ARP, MAC, VLANs, and reachability — for each tracked change. Deterministic, forensics-ready, and explainable. On-premise, with no required cloud services for core operation.

<b>On-Premise</b> Your data stays on your network	<b>Multi-Vendor</b> Cisco, Arista, Juniper, Palo Alto, and more	<b>Change Assurance</b> Maintenance status, pre/post validation, blast radius	<b>Compliance Support</b> ITIL, HIPAA, NIST CSF alignment	<b>Made in the USA</b> Designed and developed in the United States
------------------------------------------------------	--------------------------------------------------------------------	----------------------------------------------------------------------------------	--------------------------------------------------------------	-----------------------------------------------------------------------

## What ConfigGuard Does

### Configuration & Change Assurance

The flagship. Pre/post network state capture for each tracked change. **ITIL classification** (Standard / Normal / Emergency / Unauthorized), full-lifecycle change notifications, blast-radius analysis with L3 + VLAN impact and SVG maps, Maintenance Status auto-flagging, and a **Change Register** with reviewer triage and 365-day audit retention.

### Multi-Plane State Visibility

Most tools show config diffs. ConfigGuard captures and correlates **configurations, interfaces, routing tables, ARP, MAC, VLANs, and reachability** across your managed multi-vendor fleet. **Power Search** finds where any setting lives — or where it's missing.

### Asset & Site Foundation

Authoritative databases for your operations: managed multi-vendor **device inventory**, hierarchical **site → closet → rack** hierarchy, **contacts directory**, and **drawings & documentation** attached to every location. **Asset Discovery** extends visibility to non-network hosts — servers, BMCs, printers, phones, IoT — auto-classified at discovery time.

### Live IPAM & Topology

A **live IPAM** view built from your network's actual state — routing tables, ARP, interfaces, and DHCP pools parsed from device configs — not a static database. **Topology mapping** generated from SSH-based CDP/LLDP neighbor walks. **Unknown Device Detection** with OUI fingerprinting.

### Operations Intelligence

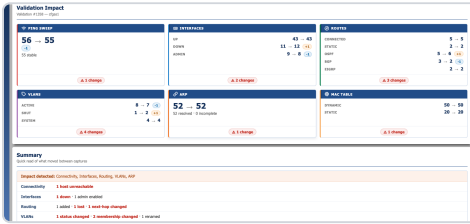
**Executive PDF reports** — Daily Summary, Executive Brief, Turnover Brief — delivered automatically. A live **Service Health spotlight dashboard** shows poller, discovery, backup, notification, scheduler, and HA-replica state at a glance. KPI health, 24-hour shift turnover, IP-context intelligence, geo-IP enrichment.

### Resilient, Secure & Compliant

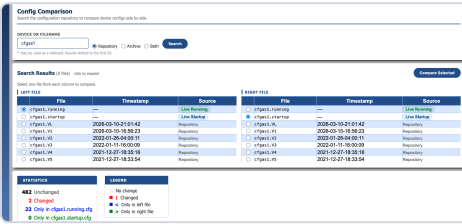
**Active/Mirror High Availability** with role-based replication. **Encrypted credential profiles** with reveal+restore history. Four-tier RBAC, **TOTP MFA, LDAP / Active Directory** integration. Modern authenticated encryption, detailed audit logging suitable for compliance review, automated **Grandfather-Father-Son backups** with admin restore wizard.

<b>On-Premise</b> Designed for fully on-premise deployment. Your configuration data stays on your network with no required cloud services for core operation.	<b>Purpose-Built</b> Not a bolt-on to a monitoring tool. Engineered from the ground up for network configuration management.	<b>Compliance Support</b> Aligns with ITIL change management practices and supports evidence for HIPAA and NIST CSF control objectives.
------------------------------------------------------------------------------------------------------------------------------------------------------------------	---------------------------------------------------------------------------------------------------------------------------------	--------------------------------------------------------------------------------------------------------------------------------------------

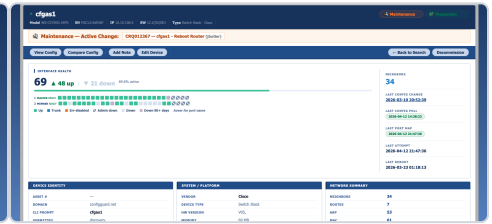
**Supported Platforms:** Cisco IOS / IOS-XE / NX-OS • Arista EOS • Juniper JunOS • Palo Alto PAN-OS • Fortinet FortiOS • Extreme EXOS • Aruba AOS/CX • Ubiquiti UniFi



CHANGE VALIDATION



CONFIGURATION REPOSITORY



DEVICE VIEW

## Complete Feature Set

### Automated Config Collection

SSH-based via multi-threaded C++ engine. Read-only — no device modifications.

### Change Register & Triage

Reviewer queue for unauthorized or unexpected changes. 365-day audit retention.

### Device Database

Managed multi-vendor inventory with lifecycle tracking, OUI fingerprinting, and color-coded status.

### Live IPAM

Built from actual network state — routes, ARP, interfaces, DHCP pools. Subnet inventory + free-IP finder.

### Asset Discovery

Non-network hosts — servers, BMCs, printers, phones, IoT — auto-classified at discovery time.

### Executive PDF Reports

Daily Summary, Executive Brief, and Turnover Brief delivered automatically.

### Active/Mirror HA

Role-based replication, one-touch promotion / demotion, license-gated signed-payload control.

### Automated Backups

Grandfather-Father-Son retention with on-demand and scheduled backup management.

### Pre/Post Validation

Side-by-side config diffs plus multi-plane operational comparison.

### Maintenance Status

Devices auto-flagged Maintenance during change windows. Reference-counted for overlap.

### Site, Closet & Rack DB

Hierarchical physical-infrastructure model: site → closet → rack with structured location data.

### Topology Mapping

Interactive topology generated from SSH-based CDP / LLDP neighbor walks. Continuously refreshed.

### Unknown Device Detection

Surface unknown or unexpected devices on your network with OUI fingerprinting.

### Service Health Dashboard

Ten-tile stoplight admin view: poller, discovery, backup, notify, scheduler, HA replica.

### Encrypted Credential Profiles

Per-device credentials with modern authenticated encryption. Reveal at level 6+, restore at level 9.

### Admin Restore Wizard

Guided system restore from any backup point. Full-state recovery for the platform.

### ITIL Change Classification

Standard / Normal / Emergency / Unauthorized — linked to the Change Request or Incident.

### Blast Radius Analysis

L3 routing impact + VLAN gateway mapping with SVG network maps and PDF export.

### Contacts & Drawings

Contacts directory and drawings / documentation attached to every site and closet.

### Power Search

Find which devices have a setting, which are missing one, or where a command appears across your network.

### Network Toolkit

DNS Tool, Firewall Helper, Route Trace, Subnet Calculator, OUI Lookup, Ping Sweeper.

### IP-Context Intelligence

Resolve any address to the device and site that owns it. Geo-IP enrichment with ASN, country, flag.

### TOTP MFA + LDAP / AD

RFC 6238 MFA with backup codes. LDAP / AD auth with group-to-role mapping. 4-tier RBAC.

### Detailed Audit Logging

Audit trail suitable for compliance review — user actions, admin events, change history.

### ITIL

Change Management, Configuration Management, Asset Management, Incident Management

### HIPAA

Access Controls, Audit Controls, Integrity Controls, Authentication, Backup & Recovery

### NIST CSF

Identify, Protect, Detect, Respond, Recover — full framework alignment

## FINANCIAL IMPACT

- ✓ One avoided outage offsets the platform cost
- ✓ Fewer escalations and war-room events
- ✓ Reduced MTTR by immediately identifying what changed
- ✓ Stronger SLA performance and customer retention

*Most of the cost of an outage isn't the failure — it's the time spent figuring out what changed. ConfigGuard reduces that delay by eliminating manual correlation and providing immediate visibility into what changed.*

## See ConfigGuard™ in Action

Schedule a personalized demo and see how ConfigGuard brings configuration assurance, operational awareness, and compliance alignment to your network operations.

[configguard.com/contact](https://configguard.com/contact)